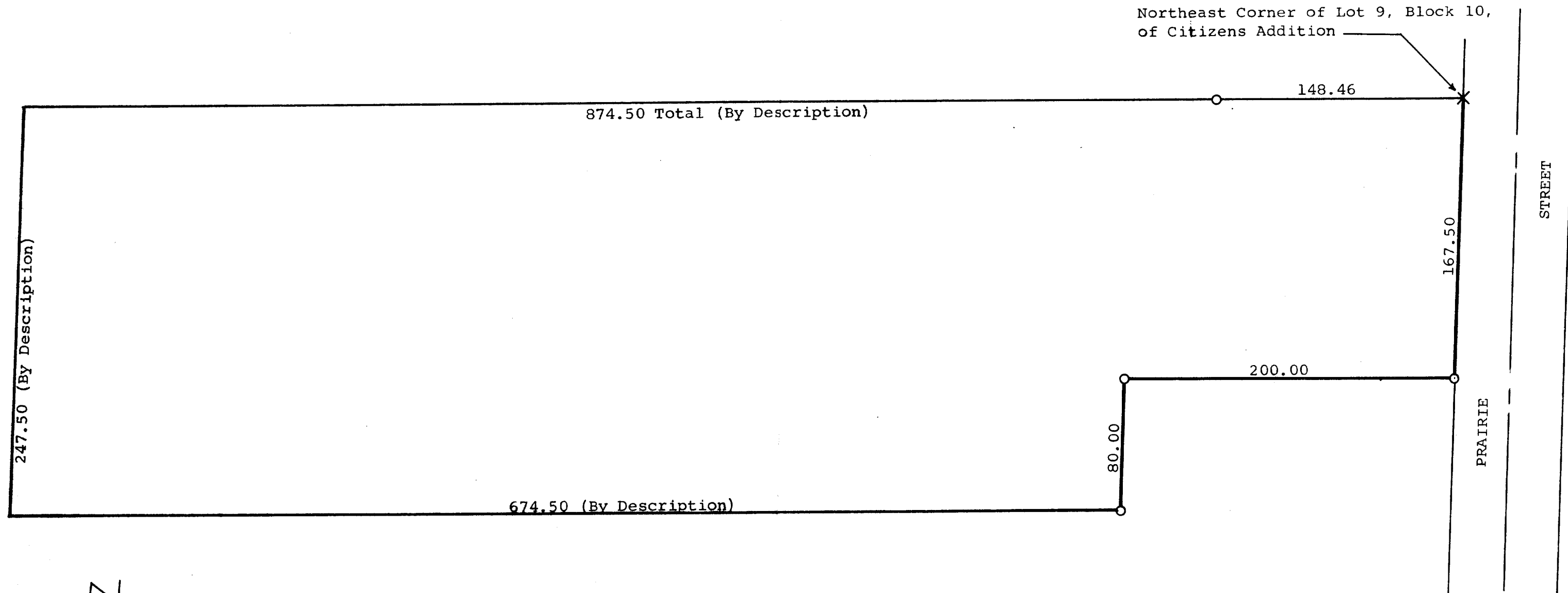


GEORGE T. DUNHAM
SURVEYING & SUBDIVIDING
DELAVAN, WISCONSIN

Northeast Corner of Lot 9, Block 10,
of Citizens Addition



Plat of survey of part of Lot 9, Block 10, Citizens
Addition to the Village of Sharon, Walworth County,
Wisconsin.
Sept. 30, 1970

George T. Dunham
George T. Dunham, Surveyor

Scale - 1" = 60'
O = Iron Pipe
X = Cross in Concrete

8-40